

# SUMMIT MARINE

Summit Marine inc

Rev130404

Instructions for mounting the 10W Solar Panel (SMSP11W) to Poly Box Lid.

Please take a few minutes to familiarize yourself with these instructions and you'll soon be on your way to many years of trouble free mooring.

These instructions are also available on the web in full color at [www.summitmarine.com](http://www.summitmarine.com), tab "assm manuals".

## Contents:

1. 1 Solar Panel 10w.
2. 1 High Performance Charge Controller.
3. 1 16 ga wire assembly 24" leads, 1 black, 1 red.
4. 2 SS Screws for mounting the charge controller.
5. 2 7" wire ties for mounting the solar panel.

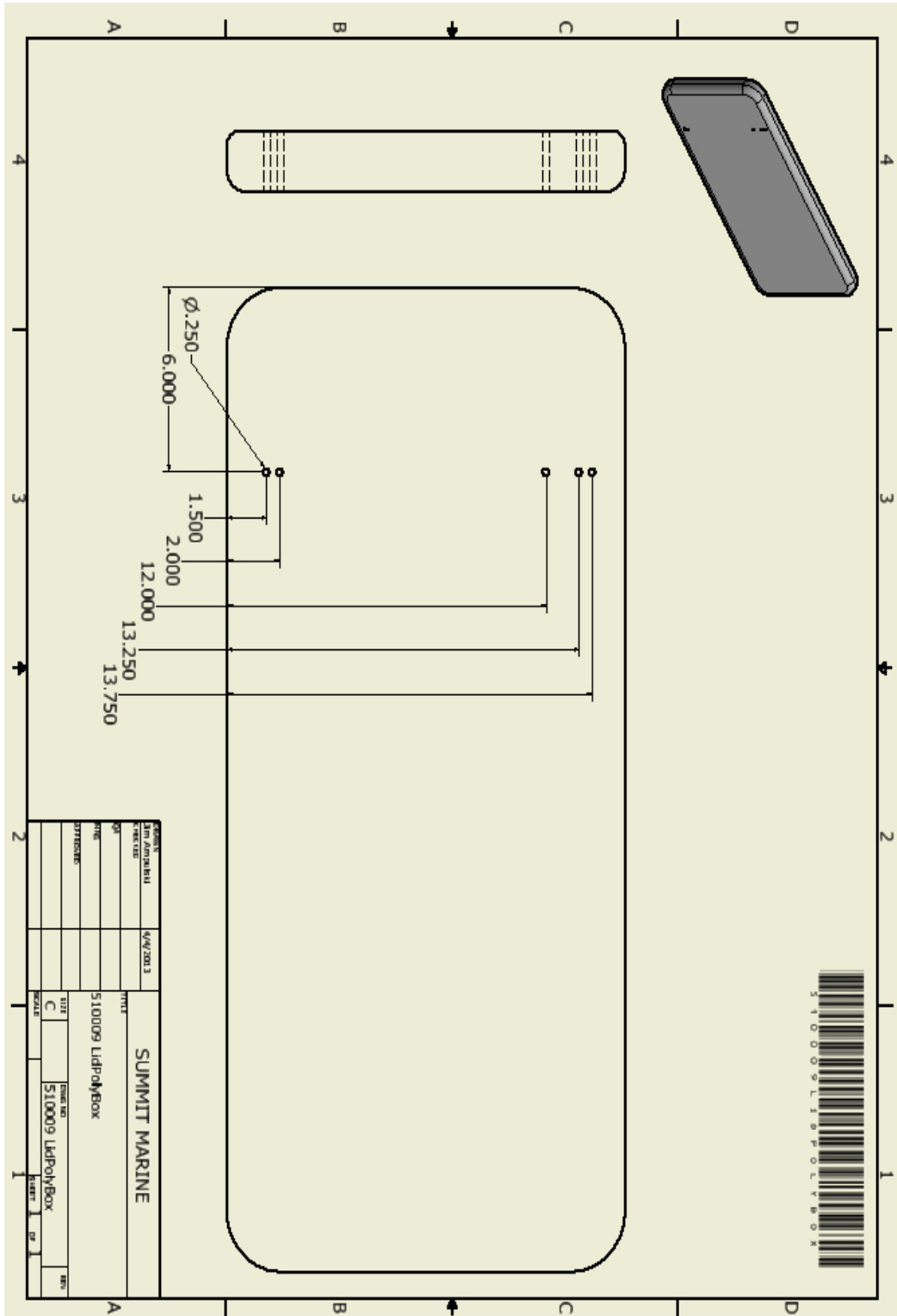
## Tools Required:

1. Drill and 1/4" drill bit, and Phillips bit.
2. Tape measure.
3. Phillips screw driver.



**Assembly:**

1. Mark left top side of lid per drawing.



2. Feed the first cable tie from inside the lid to the outside and into the hole in the solar panel frame as shown. Feed the solar panel leads into the 3rd hole from the rear (the 12" hole).



3. Feed the cable tie back into the lid using the adjacent hole and tie off. It may help to allow the solar panel to lay on the floor as shown below. Repeat for the front holes and tighten the ties. Cut ends or slide the extra tie back into the hole.



**4. Mount Charge Controller as shown.**



- 5. Wire the Solar Panel to the Charge Controller as shown on the Charge Controller. Wire the black and red leads to the charge controller as well. Hook the other end (large ring terminals) to the battery. Red to positive and black to negative. NOTE - TERMINAL CABLES FROM THE MOTOR MUST BE ATTACHED TO THE BATTERY FIRST. THESE MUST MAKE CONTACT WITH THE LUG BASE THEN THE SOLAR PANEL LEADS ARE ON TOP.**
- 6. When wired properly you should see the green led glowing as the controller sends current to the battery.**