

**Models: All Hydraulic Lifts**

**Hardware:**

- 4 – 3/8 x 2.75” stainless bolt
- 2 – 3/8 x 3” stainless bolt
- 2 – 3/8 x 2.75” Carriage Bolt
- 8 – 3/8” brass square nut

**Tools Required:**

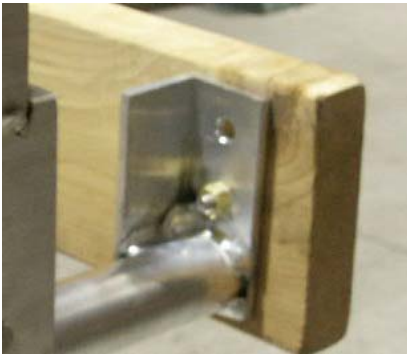
**(2) 9/16” wrenches**

**Cordless Drill with 3/8” drill bit**





1. With the boat on the lift, measure the distance that the hull extends below the Bunk Support Tube. **CAUTION: NEVER STAND OR WORK UNDER A BOAT THAT IS ELEVATED ON ANY LIFT. SERIOUS INJURY AND DEATH COULD RESULT.**
2. Remove the boat and raise the lift to expose the bunks out of the water apx 12".
3. Above photo is the outside view of the rear Bunk Support. Match the angle of the Motor Stop Bracket to the Bunk Support Tube, flush the rear as shown and drill a 3/8" hole through the Bunk Support Tube, drill through the other side of the Bunk Support Tube.
4. Use a 3/8 x 3" bolt to fasten. Repeat for other side, remember to have the angle face toward the outside. Do not fasten the (2) lower screws in the 6" tube yet...
5. Slide the round tubes into the 6" tube first, then insert the (2) 3/8 x 2.75" bolts into the 6" tube. Leave loose for now.
6. Fasten the Cedar board using the 3/8 x 2.25" carriage bolts, position board in the lowest position on the angle brackets and leave loose for now. Make certain this board is lower than the boat hull, (ref: measurement taken above in step 1). Use the holes as shown for now. And always make certain the wood is higher than the metal to protect the boat hull from scratching.



The above photos shows 2 variations of the cedar location obtained by twisting the pipe/bracket on the hole. This gives the stop 4" of height difference.

7. Position boat back on the lift, raise lift and slide and adjust wood to fit.
8. Tighten all bolts.

**SUMMIT MARINE MOTOR STOP INSTRUCTIONS**  
Models: All Hydraulic Lifts

SPRING 2007

**Hardware:**

- 4 – 1/2" x 1" stainless bolt
- 4 – 3/8" x 1" stainless bolt
- 4 – 3/8" brass square nut

**Tools Required:**

9/16" wrench

12" adjustable wrench



Raise Boat Lift all the way up. This will expose potential interference with Hinge 'V'.

At the rear of the lift, remove the 3/8 x 1" bolt holding the carpeted boards to the Bunk Tube. Slide Motor Stop onto tubes as shown. Do not slide too far forward as this will interfere with the Hinge 'V'.



Tighten the 1/2" bolts, and lower lift to check clearance. Refasten the 3/8" x 1" bolts that hold the carpeted bunks to the Bunk Tubes. Insert Wood Stop Bracket and slide (4) square nuts and 3/8" x 1" bolts into tube and tighten. Place boat on lift and check front to rear balance of boat on lift. Adjust Motor Stop as necessary to obtain proper placement on lift.